

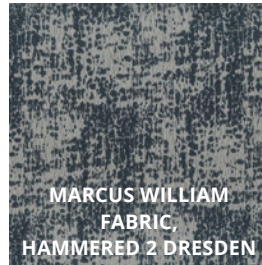


# JESSICA NELSON, ASID & STEPHANIE LINDSEY, RID, ASID

Etch Design Group represents the philosophy that good design always leaves a lasting impression, and in this decadent owners retreat, we did just that. The custom Australian-lamb fur rug and plush neutral bedding offers a soft and subtle base, which is layered with rich hues of cobalt blue and sophisticated gray. The grand four-post bed with gold leaf accents offers a Hollywood glam appeal, which we paired with a mid-century ribbed back velvet armchair. The clients' unique personal style is incorporated throughout each custom element, striking a delicate balance between purpose and beauty.



MAYA ARMCHAIR, BRABBU DESIGN FORCES



MARCUS WILLIAM FABRIC, HAMMERED 2 DRESDEN



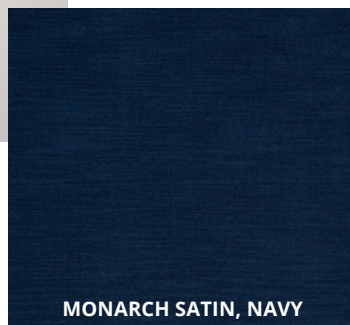
CONRAD NIGHTSTAND, MADE GOODS



TABLE LAMP, CENTURY



VELVET SCROLL, ZIMMER-ROFIDE



MONARCH SATIN, NAVY



COLTON BENCH, BERNHARDT



ABSTRACT BED, MODERN HISTORY